



# Condron Chamber Catch-pit

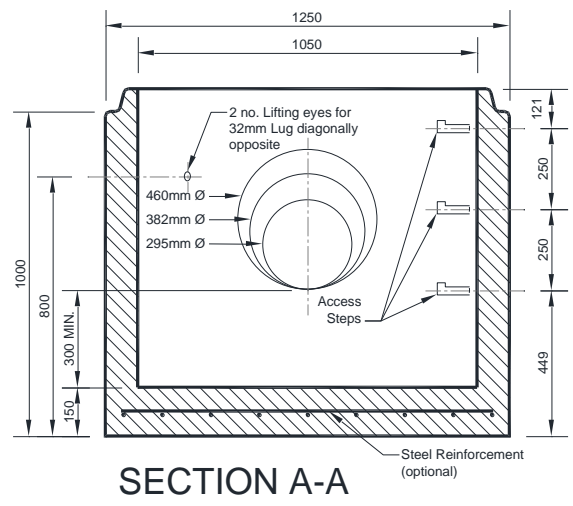
Inlet / outlet size	225mm Ø	300mm Ø	375mm Ø	450mm Ø
Available Angles	90° base 180° base 270° base	90° base 180° base 270° base	90° base 180° base 270° base	90° base 180° base 270° base
Chamber Size 900mm	✓	✓	✓	
Chamber Size 1050mm	✓	✓	✓	✓
Chamber Size 1200mm	✓	✓	✓	✓
Chamber Size 1350mm	✓	✓	✓	✓
Chamber Size 1500mm	✓	✓	✓	✓
Chamber Size 1800mm	✓	✓	✓	✓
Chamber Size 2100mm	✓	✓	✓	✓
Optional angles available on request				

- Inlet/outlet opes can vary to suit 225mm, 300mm, 375mm and 450mm Condron Concrete S&S Pipes, Ogee Pipes or (proprietary) Twin Wall and P.V.C pipes.
- Base Configurations can incorporate a third inlet/outlet ope and are available left or right-handed.
- Reinforced concrete base (Optional).
- Extendable depths and standard manhole covers are available.
- Chamber Catch-pits can be supplied in 900mm Ø up to 2100mm Ø upon request.
- Optional angles and sump depth available
- Widewall (WTS) optional incorporating 3no. 2.5T lifting anchors available 1200,1350, 1500mm
- Quick installation.
- Catch-pit sections are manufactured and tested in accordance with I.S. 420 and I.S. EN 1917:2004
- Steps available if required.
- National Roads Authority (NRA) approved.
- Contact Condron Concrete Works at Phone +353 57 9349000 - 9 (9 lines)

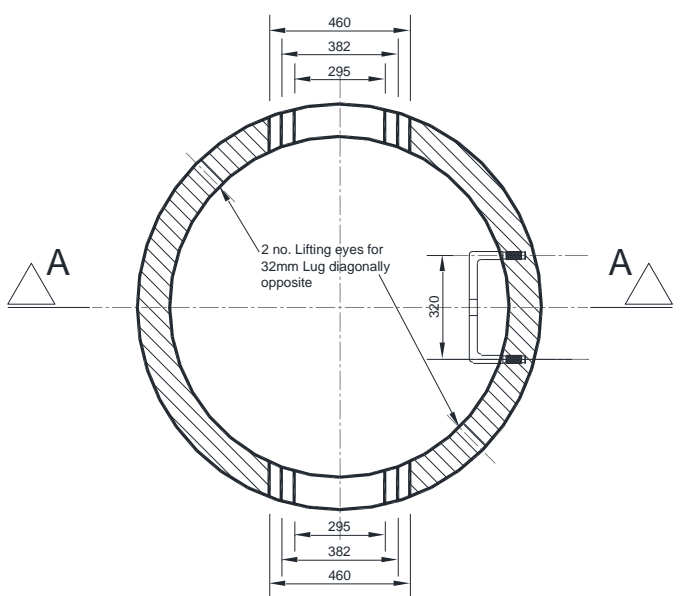
**“All Catchpit Units MUST be lifted with an appropriate and Certified 3 way Lifting Chains and Clamps”**

**“Units must not be slung through opes”**

- S.W.L: Catchpit 900mm = 1.1T**
- S.W.L: Catchpit 1050mm = 1.4T**
- S.W.L: Catchpit 1200mm = 1.8T**
- S.W.L: Catchpit 1350mm = 2.6T**
- S.W.L: Catchpit 1500mm = 3.0T**
- S.W.L: Catchpit 1800mm = 4.0T**
- S.W.L: Catchpit 2100mm = 5.2T**



**SECTION A-A**



**PLAN**

**Note:** The information given in this data sheet is, to the best of our knowledge, correct, but customers, including consultant engineers, site engineers, architects and specifiers, must satisfy themselves that any particular product is suitable for their specific requirements. Condron Concrete Works, or their employees, or agents, do not accept any liability whatsoever arising from anything contained in this Data Sheet.



**Note:** The information given in this data sheet is, to the best of our knowledge, correct, but customers, including consultant engineers, site engineers, architects and specifiers, must satisfy themselves that any particular product is suitable for their specific requirements. Condron Concrete Works, or their employees, or agents, do not accept any liability whatsoever arising from anything contained in this Data Sheet.