



Condron Chamber Catch-pit

Inlet / outlet size	225mm Ø	300mm Ø	375mm Ø
90° base	✓	✓	✓
180° base	✓	✓	✓
270° base	✓	✓	✓

- Inlet/outlet opes can vary to suit 225mm, 300mm and 375mm Condron Concrete S&S Pipes, Ogee Pipes or (proprietary) Twin Wall and P.V.C pipes.
- Base Configurations can incorporate a third inlet/outlet ope and are available left or right handed.
- Reinforced concrete base.
- Extendable depths and standard manhole covers available.
- Chamber Catch-pits can be supplied in 900mm or 1200mm Ø upon request.
- Quick installation.
- Catch-pit sections are manufactured and tested in accordance with I.S. 420 and I.S. EN 1917:2004
- Steps available if required.
- National Roads Authority (NRA) approved.
- Contact Condron Concrete Works at Phone +353 57 9349000 - 9 (9 lines)

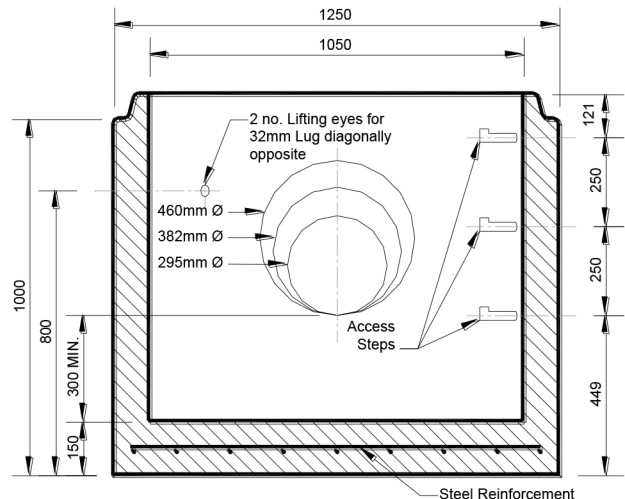
“All Catchpit Units MUST be lifted with a pppropriate and Certified 3 way Lifting Chains and Clamps”

“Units must not be slung through opes”

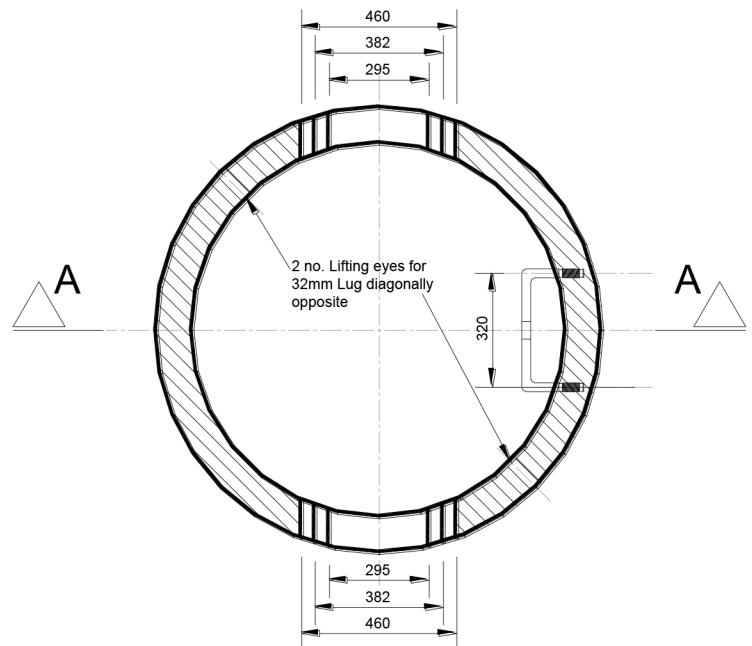
S.W.L : Catchpit 900mm = 1.1T

S.W.L : Catchpit 1050mm = 1.4T

S.W.L : Catchpit 1200mm = 1.8T



SECTION A-A



PLAN

Note: The information given in this data sheet is, to the best of our knowledge, correct, but customers, including consultant engineers, site engineers, architects and specifiers, must satisfy themselves that any particular product is suitable for their specific requirements. Condron Concrete Works, or their employees, or agents, do not accept any liability whatsoever arising from anything contained in this Data Sheet.